



PORTFOLIO

GRAPHIC DESIGN / PRINT



TEXTILENE
nano™ 97 TWILL

Twitchell
Technical Products, LLC

OMEGATEX™

OmegaTEX™ is one of the strongest, all-inclusive screen options on the market today. It offers protection from sun, wind, rain, insects, dust/ debris and curious neighbors. The screen protects against storm events and has passed certification under the Dade County Projectile Test when used with screening systems NOA labeled and Miami-Dade tested.

Twitchell
Technical Products, LLC

twitchellcorp.com 800-633-7550

The inside story to our outside success.

Booth 1337

Our outside success story truly begins with our Twitchell™ family of employees. Since 1922, they've helped us lead the way in the outdoor industry. They're our valued people and you're their valued customer. It's that simple. And every fabric, every fiber, every textile and every cutting-edge coating is made right here in the USA in our Dothan, Alabama headquarters. Made here and made to last. Making certain every single customer is satisfied - every single time.

Twitchell
Technical Products, LLC

MADE IN THE USA

twitchellcorp.com 800-633-7550

Where Innovation and Experience are cut from the same material.

The strength of the Twitchell™ brand goes beyond our textiles. With more than 90 years experience in the industry, our flexible, innovative solutions have proven to be our real strength. As the creator of Textilene®, Twitchell™ continues to make research and development a driving force. Our broad spectrum of stock constructions, colors and widths provide the foundation of strong product lines, and even stronger customer relationships.

Twitchell
Technical Products, LLC

Booth 1913

www.twitchellcorp.com // 800-633-7550 MADE IN THE USA



TEXTILENE
BRAND FABRIC
nano™ 50/55/60

Tell your contractor you want Textilene® nano™ 50/55/60 for these great reasons!

Tear and Puncture Resistant

A combination of strength and weight create unmatched durability in Twitchell's Textilene® nano™ 50/55/60. At 6.5 oz. per square yard, Textilene® nano™ 50/55/60 is 18% heavier than competitor offerings. Unlike fabric made of dip-coated fiberglass, Textilene® nano™ 50/55/60 fabric utilizes an extrusion-coated polyester core yarn, which results in superior ball burst strength that is 300% stronger than competitive offerings* and extended life of the product. These features translate into a fabric highly resistant to punctures and tears.

*Strengths are industry-established measures for the amount of force required to tear both damaged and undamaged textile products.

Textilene® nano™ 50/55/60 outlasts fiberglass screen in durability and tear resistance.

10^{yr}
Limited
Warranty



www.twitchellcorp.com // 800-633-7550

MADE IN THE USA



Stability from UV Damage

The UV tolerant properties of Textilene® nano™ 50/55/60 reveal themselves in the form of unsurpassed color retention, longevity and light filtering. Extended exposure to the sun will not result in the bleaching, flaking and fading like other screens.

Mildew Resistant

Textilene® nano™ 50/55/60 fabric includes a biocide compound that resists mildew growth, yielding longer lasting beauty from the fabric.

Ten Year Limited Warranty

Textilene® nano™ 50/55/60 has a life expectancy of more than 10 years and is backed by a 10-year limited warranty. The average lifespan of fiberglass fabric is approximately six years and is typically backed by only a one to three year warranty.



TEXTILENE
BRAND FABRIC
nano™ 50/55/60

Better Protection. Better Value.

You may never have to re-screen again.

Textilene® nano™ 50 Vs. the Leading Fiberglass Fabric

	Textilene® nano™ 50	Fiberglass Coated
Weight, oz/yd ²	5.9	4.5
Tensile Strength (strip), lbf	Warp	78.8
	Fill	54.2
Tear Strength, lbf	Warp	14.0
	Fill	9.9
Ball Burst Strength Test	188 lbs	61 lbs
Warranty Length	10 yrs	1-3 yrs
Expected Life Span of Product	10+ yrs	3-6 yrs

Textilene® nano™ 50/55/60 offers superior technology available in screen protection for windows, doors, pool, patio or porch. It is the perfect choice for the homeowner who demands the best in family enjoyment and safety outdoors while providing a high-quality, long-lasting home improvement investment. It provides insect and pest protection, privacy, safety, and debris-control. Textilene® nano™ 50/55/60 offers the homeowner extended durability and protection by incorporating superior tear resistance and tensile strength.

Now you can have a screen that will not need to be replaced every few years. Many screen fabrics are limited in strength and durability, needing replacement in only a few years. Fiberglass screen can become brittle within three to four years making it easily damaged by pets, flying objects or children at play. Within six to seven

years, deteriorated fiberglass screen can be torn to shreds by a strong gust of wind.

The extrusion-coated advanced polymer formula of Textilene® nano™ 50/55/60 defies deterioration. In a simulated seven-year weathering test, the fabric lost only one percent of its original strength. In fact, it remained three times stronger than new fiberglass screen.



www.twitchellcorp.com // 800-633-7550

Booth #1913

That's How We Roll!

- Hot Melt Extrusion Coating and Lamination: Up to 107 inches wide
- Slitting: Down to 1 inch wide
- Sheeting: Up to 15 feet long
- Labeling and Packaging: Customized

We combine proven methods with creative solutions to supply exceptional quality in coated and laminated applications.

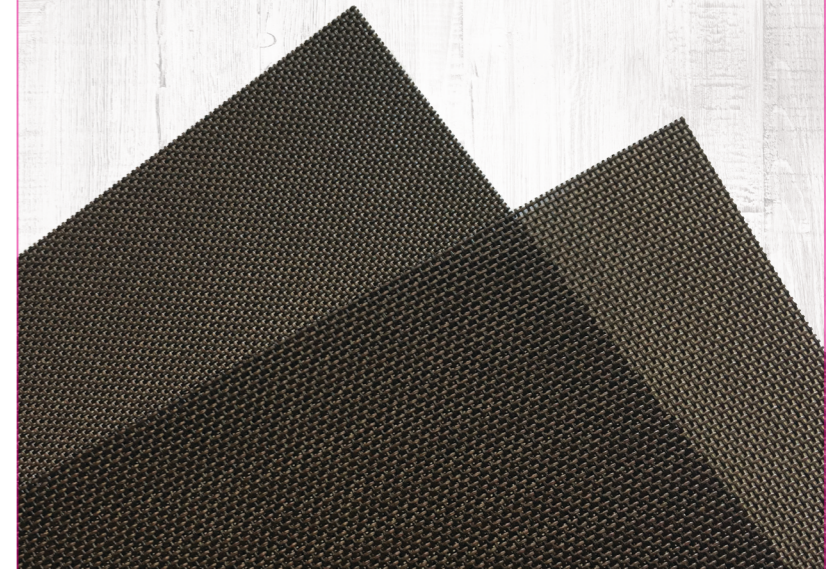
1-800-633-7550
www.twitchellcorp.com

MADE IN THE USA

TEXTILENE
BRAND FABRIC
80

TEXTILENE
BRAND FABRIC
90

One color. Endless possibilities. Our popular Black/Brown color is available in Textilene® 80 and 90. Beautifully blended color for a variety of applications.

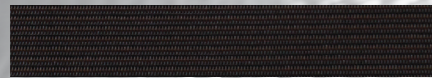


twitchellcorp.com

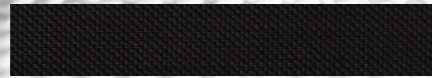
800-633-7550

SHADEVIEW18D

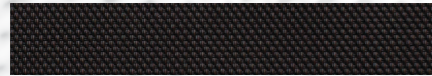
Twitchell offers a wide variety of fabrics ideal for glare and heat control without sacrificing the ability to have see-through visibility. Our fabrics are the number one specified fabrics in the world. Ideal for all building applications both commercial and residential.



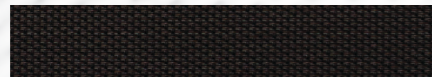
18D - 1%



18D - 3%



18D - 5%



18D - 10%

Fenestration Properties

	Solar Heat Control Properties				Low E Glass				3mm Single Clear Glass			
	TS	RS	AS	TV	LT	G-Value	SC	SHGC	LT	G-Value	SC	SHGC
1%												
Glazing Performance					74	59	80	59	90	85	100	85
White, 1%	10	78	13	7	7	32	36	32	7	27	31	27
White/Alabaster, 1%	6	65	29	3	3	36	41	36	3	34	39	34
Medium Tan, 1%	4	49	47	1	1	41	47	41	1	43	50	43
Dawn/Dusk/White, 1%	2	35	62	1	0	47	54	47	0	53	61	53
Dawn/Dusk, 1%	2	31	68	0	0	47	54	47	0	53	61	53
Black/Brown, 1%	0	5	95	0	0	55	63	55	0	69	79	69
2%												
Glazing Performance					74	59	80	59	90	85	100	85
White, 2%	17	71	12	14	14	36	42	36	14	36	41	36
White/Alabaster, 2%	13	64	24	9	9	36	42	36	9	36	41	36
Medium Tan, 2%	9	49	42	6	6	34	39	34	6	32	36	37
Dawn/Dusk/White, 2%	9	58	53	7	7	45	51	45	7	50	58	50
Dawn/Dusk, 2%	6	5	89	6	6	55	64	55	6	69	80	69
3%												
Glazing Performance					74	59	80	59	90	85	100	85
White, 3%	14	73	13	11	11	33	38	33	11	30	35	30
Medium Tan/White, 3%	10	61	29	8	8	37	43	37	8	37	42	37
Medium Tan, 3%	9	51	40	6	6	40	46	40	6	43	49	43
White/Dawn, 3%	10	55	35	8	8	39	45	39	8	40	46	40
Dawn/Dusk, 3%	7	31	62	6	6	47	54	47	6	54	62	54
Charcoal/Graphite, 3%	6	9	86	5	5	54	62	54	5	67	77	67
Black/Brown, 3%	5	5	90	5	5	55	64	55	5	69	80	69
5%												
Glazing Performance					74	59	80	59	90	85	100	85
White, 5%	17	72	11	14	14	34	39	34	14	31	36	31
Medium Tan/White, 5%	13	59	27	11	11	38	43	38	11	38	44	38
Medium Tan, 5%	10	51	40	7	7	41	47	41	7	43	49	43
White/Dawn, 5%	9	56	35	7	7	39	45	39	7	40	46	40
Dawn/Dusk, 5%	9	30	61	8	8	47	54	47	8	55	63	55
Charcoal/Graphite, 5%	5	9	86	5	5	54	62	54	5	67	77	67
Black/Brown, 5%	7	5	89	7	7	55	64	55	7	69	80	69
10%												
Glazing Performance					74	59	80	59	90	85	100	85
White, 10%	21	68	11	18	18	35	40	35	18	34	40	34
Medium Tan/White, 10%	15	58	27	12	12	38	44	38	12	40	45	40
Medium Tan, 10%	15	58	27	12	12	38	44	38	12	40	45	40
White/Dawn, 10%	15	55	30	13	13	39	45	39	13	41	47	41
Dawn/Dusk, 10%	13	29	58	12	12	48	55	48	12	56	64	56
Charcoal/Graphite, 10%	11	9	80	11	11	54	62	54	11	67	77	67
Black/Brown, 10%	12	4	84	11	4	55	64	55	4	70	81	70

LT = Light Transmittance
 G-Value = Total Solar Transmittance
 SC = Shading Coefficient
 SHGC = Solar Heat Gain Coefficient
 TS = Solar Transmittance
 RS = Solar Reflectance
 AS = Solar Absorbed
 TV = Visible Transmittance

1-800-633-7550 | twitchellcorp.com

Twitchell Technical Products, LLC



Specifications

Product Description: Shadeview 18D is a vinyl coated polyester fabric. This beautifully woven fabric is durable yet lightweight in nature for any interior application including roller shades, fixed screens, and panel tracks. These fabrics help improve energy efficiency, mood from natural sunlight, improve visibility during the day, and reduce risks of adverse effects caused by solar heat and light.

STYLE	18D 1%	18D 2%	18D 3%	18D 5%	18D 10%
Openness Factor	1%	2%	3%	5%	10%
UV Blockage	99%	98%	97%	95%	90%
Weight, oz/yd²	19.1	16.9	19.5	17.0	16.1
Thickness, inches	0.0371	0.0398	0.0359	0.0337	0.0389
Weatherability	G154: Trace Discoloration				
Mildew Resistance	G21 - 13: No Growth				
Fabric Composition	PVC: 75%, Polyester: 25%				
Suggested Fabrication Methods	Crush Cut, Laser, Cold Knife, RF Weld, Railroading				
Ideal Uses	Roman Shades, Roller Shades, Sheers, Screens				
Roll Length	Approx. 30 linear yds				
Warranty	10 Year Interior				
Environmental Certification	Greenguard Gold				

REACH Compliant

Regulated by Registration, Evaluation, Authorization and Restriction of Chemicals. REACH places greater responsibility on industry to manage the risks that chemicals may pose to human health and the environment.

Children's Toy Act

Does not contain Harmful phthalates listed under Section 108 of the Consumer Product Safety Improvement Act of 2008 (CPSIA).

Fire Classification

Passes California U.S. Title 19 (small scale), NFPA 701-2015 TM#1 (small scale), NFPA 101 (Class A Rating), USC (Class 1), BS 5867 2008 Part 2 Type B Performance, NFPA 701 TM #2 (large scale), and CANULC-5 109-03 (large and small scale).

Environmental Certification

GREENGUARD gold certified. Acceptable for use in environments such as schools and healthcare facilities. Complies with requirements of the State of California's Department of Public Health Standard Method for Testing and Evaluation of Volatile Organic Chemical Emissions from Indoor Sources Using Environmental Chambers, Version 1.1 (2010)* (also known as California Section 01350).

ROHS Compliant

Free of Lead (Pb), Cadmium (Cd), Mercury (Hg), Hexavalent chromium (Hex-Cr), Polybrominated biphenyls (PBB), and Polybrominated diphenyl ethers (PBDE).

Bacteria and Fungal Resistance

Passes ASTM E 2180, ASTM G31. Includes specially formulated antimicrobial.



DISTRIBUTED OR MANUFACTURED BY:

1-800-633-7550 | twitchellcorp.com

Twitchell Technical Products, LLC



Product Numbers

MADE WITH TEXTILENE

SHADEVIEW18D

18D - 1%

Color	Width	Item #
White	96"	T174H5009
White / Alabaster	96"	T174H7022
Medium Tan	96"	T174H9010
Dawn / Dusk / White	96"	T174H7029
Dawn / Dusk	96"	T174H7030
Black / Brown	96"	T174H7032

18D - 2%

Color	Width	Item #
White	96"	T174D5005
White / Alabaster	96"	T174D7015
Medium Tan	96"	T174D7009
Dawn / Dusk / White	96"	T174D7219
Black / Brown	96"	T174D7103

18D - 3%

Color	Width	Item #
White	96"	T17A55155
126"	126"	T17A55157
Medium Tan / White	96"	T17A57371
126"	126"	T17A57377
Medium Tan	96"	T17A55156
126"	126"	T17A55160
White / Dawn	96"	T17A57372
126"	126"	T17A57362
Dawn / Dusk	96"	T17A57373
126"	126"	T17A57378
Graphite / Charcoal	96"	T17A57379
126"	126"	T17A57383
Black / Brown	96"	T17A57397
126"	126"	T17A57375

18D - 5%

Color	Width	Item #
White	96"	T17A55152
126"	126"	T17A55158
Medium Tan / White	96"	T17A57360
126"	126"	T17A57368
Medium Tan	96"	T17A55151
126"	126"	T17A55159
White / Dawn	96"	T17A57359
126"	126"	T17A57363
Dawn / Dusk	96"	T17A57361
126"	126"	T17A57362
Graphite / Charcoal	96"	T17A57390
126"	126"	T17A57380
Black / Brown	96"	T17A57358
126"	126"	T17A57382

18D - 10%

Color	Width	Item #
White	96"	T17A60015
126"	126"	T17A60146
Medium Tan / White	96"	T17A67228
126"	126"	T17A67268
Medium Tan	96"	T17A60141
126"	126"	T17A6
White / Dawn	96"	T17A67230
126"	126"	T17A6
Dawn / Dusk	96"	T17A67225
126"	126"	T17A6
Graphite / Charcoal	96"	T17A67200
126"	126"	T17A67202
Black Brown	96"	T17A67229
126"	126"	T17A67038

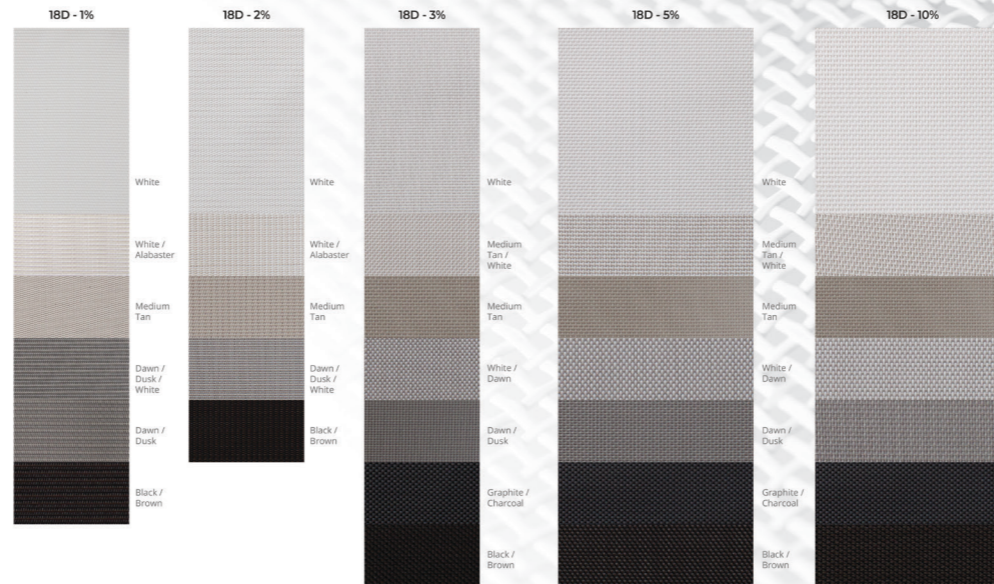
96" = 243cm | 126" = 320cm

*Custom colors and widths available. Minimum order of 1000 yds. Upcharges may apply. ** Available in 30 yd rolls.

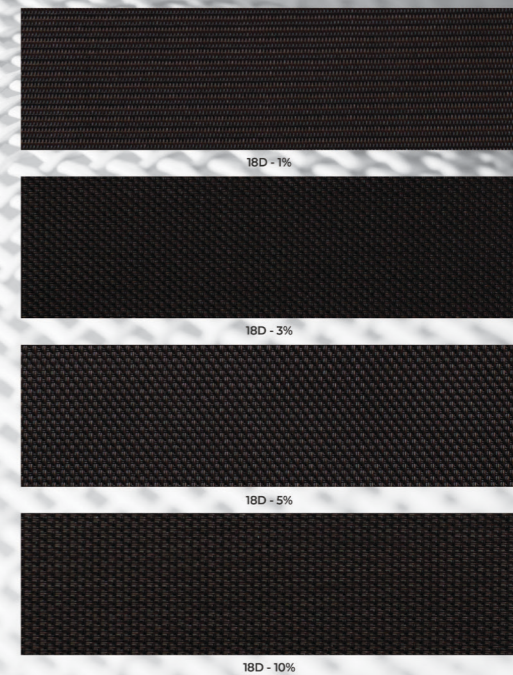
1-800-633-7550 | twitchellcorp.com

Twitchell Technical Products, LLC

Colors

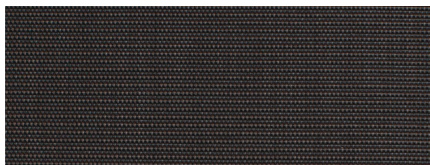


Openness Factors

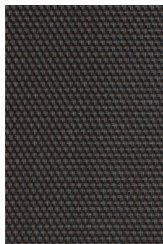




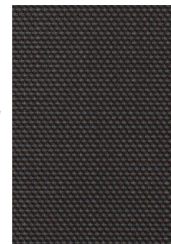
We strive to instill confidence in the quality and performance of our products. Equipped with Cradle-to-Cradle Certification, we can ensure material health and reutilization, carbon management, water stewardship, and social fairness are present in our products and practices.



1000 SERIES - 1%



5000 SERIES - 5%



3000 SERIES - 3%

Due to the technical limitations of digital cameras and inconsistencies of display monitors, the characteristics and colors of the fabrics seen on your screen may be slightly different than the actual product.



#1 ARCHITECTURALLY SPECIFIED FABRIC IN THE WORLD

Feb 2020

Fenestration Properties

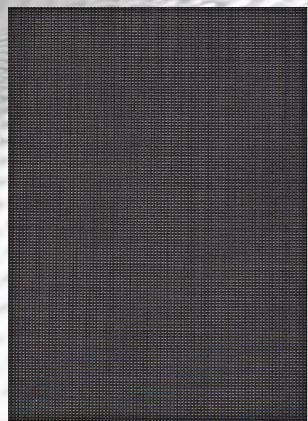
	Solar Heat Control Properties				Low E Glass			3mm Single Clear Glass				
	TS	RS	AS	TV	LT	G-Value	SC	SHGC	LT	G-Value	SC	SHGC
1%												
Glazing Performance					74	59	80	59	90	85	100	85
White, 1%	20	67	13	19	19	35	41	35	19	35	40	35
Frost, 1%	8	56	36	7	7	39	44	39	7	40	45	40
Cream, 1%	12	58	31	9	9	38	44	38	9	39	45	39
Ecru, 1%	7	49	44	4	4	41	47	41	4	43	50	43
Oyster Grey, 1%	1	27	71	1	1	48	55	48	1	56	64	56
Steel Grey, 1%	0	10	90	0	0	53	61	53	0	65	75	65
Walnut, 1%	0	5	95	0	0	55	63	55	0	68	78	68
3%												
Glazing Performance					74	59	80	59	90	85	100	85
White, 3%	19	68	13	18	18	35	40	35	18	34	39	34
Frost, 3%	9	54	37	8	8	38	44	38	8	39	45	39
Cream, 3%	11	57	32	8	8	38	44	38	8	39	45	39
Ecru, 3%	7	50	43	4	4	40	47	40	4	43	49	43
Oyster Grey, 3%	4	26	70	3	2	48	56	48	2	57	65	57
Steel Grey, 3%	2	9	89	2	2	54	62	54	2	66	76	66
Walnut, 3%	1	5	94	1	1	55	63	55	1	68	78	68
5%												
Glazing Performance					74	59	80	59	90	85	100	85
White, 5%	21	66	13	20	20	36	41	36	20	36	41	36
Frost, 5%	14	53	32	13	13	40	46	40	13	42	49	42
Cream, 5%	13	58	29	11	11	38	44	38	11	39	45	39
Ecru, 5%	8	51	41	5	5	40	51	44	5	43	49	43
Oyster Grey, 5%	6	25	69	5	5	49	56	49	5	58	66	58
Steel Grey, 5%	5	9	86	5	5	54	62	54	5	66	76	66
Walnut, 5%	3	6	92	3	3	55	63	55	3	68	79	68

LT = Light Transmission
 G-Value = Total Solar Transmittance
 SC = Shading Coefficient
 SHGC = Solar Heat Gain Coefficient
 TS = Solar Transmittance
 RS = Solar Reflectance
 AS = Solar Absorbed
 TV = Visible Transmittance

DISTRIBUTED OR MANUFACTURED BY:

1-800-633-7550 | twitchellcorp.com

Twitchell Technical Products, LLC



Due to the technical limitations of digital cameras and inconsistencies of display monitors, the characteristics and colors of the fabrics seen on your screen may be slightly different than the actual product.

Specifications

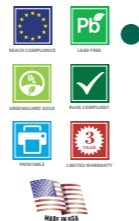
REACH Compliant - Regulated by Registration, Evaluation, Authorization and Restriction of Chemicals. REACH places greater responsibility on industry to manage the risks that chemicals may pose to human health and the environment.

Children's Toy Act - Does not contain harmful phthalates listed under Section 108 of the Consumer Product Safety Improvement Act of 2008 (CPSIA).

Environmental Certification - GREENGUARD gold certified. Acceptable for use in environments such as schools and healthcare facilities. Complies with requirements of the State of California's Department of Public Health "Standard Method for Testing and Evaluation of Volatile Organic Chemical Emissions from Indoor Sources Using Environmental Chambers, Version 1.1 (2010)" (also known as California Section 01350).

RoHS Compliant - Free of Lead (Pb), Cadmium (Cd), Mercury (Hg), Hexavalent Chromium (Hex-Cr), Polybrominated biphenyls (PBB), and Polybrominated diphenyl ethers (PBDE).

Bacteria and Fungal Resistance - Passes ASTM E 2180, ASTM G21. Includes specially formulated antimicrobial.



Technical Data

Item Number: T13DL5

Product Description: A woven fabric using .025" diameter vinyl coated 1000 denier polyester core yarns woven in the warp and fill.

Attribute	ASTM	Warp	Fill	Typical
Weight, oz/yd ²	D2775-17			10.3
Tensile Strength (grab), lbf	D5034-09	424.1	325.2	
Tensile Strength (strip), lbf	D5035-11	220.1	144.2	
Tear Strength (trapezoidal), lbf	D5073	94.2	62.6	
Elongation, %	D5035-11	15.1	13.7	
Abrasion Resistance (Martindale)	D3884-09	No Exposure of Core Yarn		
Flammability Rating		CA TB 117-2013		
Weatherability (1200 hours)	G194-16	Trace Discoloration		
Mildew Resistance	G21-13	No Growth		
Thickness, inches	D1777-15			0.0265

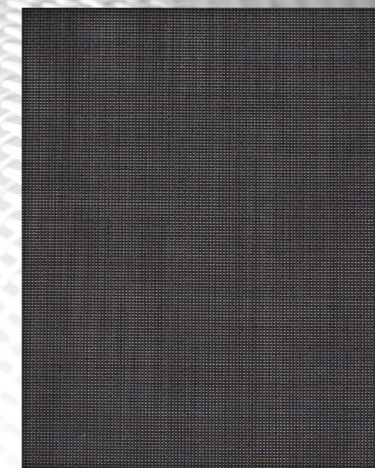
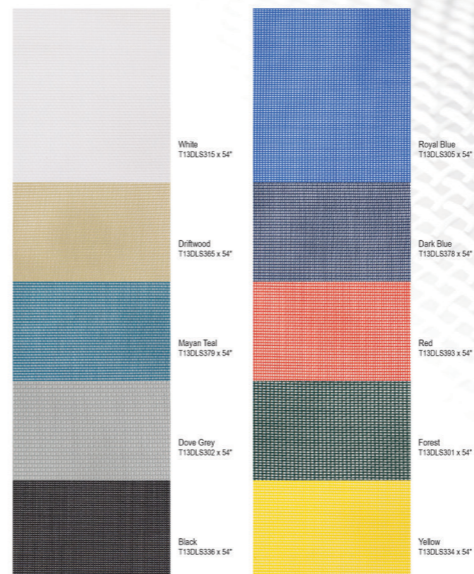
The above results are a representation of real data from single test samples in our laboratory. Independent test results may vary. Presently no specification is incorporated.

This breathable mesh fabric is made to stand the test of tough use yet attractive enough for any dinner setting by the pool. TTP's TEXTILENE® brand of woven PVC coated polyester fabric is known as an industry standard for versatility and strength.

*Custom colors and widths available. Minimum order of 300 yds. Upcharges may apply. ** Available in 60 yd rolls.

1-800-633-7550 | twitchellcorp.com

Twitchell Technical Products, LLC



Due to the technical limitations of digital cameras and inconsistencies of display monitors, the characteristics and colors of the fabrics seen on your screen may be slightly different than the actual product.

Black T13DL5336 x 54"

54" = 137.16 cm

1-800-633-7550 | twitchellcorp.com

Twitchell Technical Products, LLC





ENTERPRISE
PUBLIC LIBRARY



With an officer assigned to EVERY account, no matter the size, the NEW SunSouth is reaching out like never before. Holding your hand every step of the way, we will help you navigate personal and commercial decisions.

There's no better time for a face to face about your financial needs. Call us today for bright ideas on how we can make your banking experience better.

Bright Ideas. Better Banking.

MOBILE BANKING LENDING SOLUTIONS BUSINESS & PERSONAL

Dothan
334-677-4411
108 Jamestown Blvd.

Clio
334-397-4413
3274 Louisville Street

www.SunSouthBank.com

ESTABLISHED IN 1954

108 Jamestown Boulevard
Dothan, Alabama 36301

Member FDIC EQUAL OPPORTUNITY LENDER

Local Postal Customer

PRSRT STD
ECRWSS
U.S. POSTAGE
PAID
EDDM RETAIL



Bright Ideas Better Banking

As the CEO of SunSouth Bank, I understand the importance of offering banking services that people need in the way they need them. We wanted to offer a simpler way to bank without losing the creativity that comes from working face to face with a personal banker. Although our customers enjoy our online and mobile banking tools, they told us what they needed most was someone who understood their goals and helped them find solutions.

Dothan
334-677-4411
108 Jamestown Blvd.

Clio
334-397-4413
3274 Louisville Street

www.SunSouthBank.com

Member FDIC EQUAL OPPORTUNITY LENDER f



IN GOLF AS IN BANKING,
IT'S THE FOLLOW THROUGH
THAT MAKES THE DIFFERENCE.



As bankers, we understand the importance of supporting your financial goals from start to finish. Whether financing your dream home or a new business, follow through is our game.



SunSouthBank.com



OUR LONG GAME'S AS
GOOD AS OUR SHORT.



No matter where you stand with your financial goals, helping you win is always our end game.



Proud Sponsor of the
69th Annual Future Masters

SunSouthBank.com



Our Bright Money
Market Shines.

1.00%^{APY*}

The Best Area APY*



Mortgage Banking Made Easy.

We understand that great rates are important. Having friendly professionals to walk you through the process makes it even better.



Stacey Tillery
Mortgage Loan Processor
NMLS ID #1546983



Wayne Hendley
Mortgage Loan Officer
NMLS ID #1513372

Our job is to simplify the mortgage process. Whether you are a first time home buyer, a growing family or a downsizing empty nester...we're here for you. Give us a call today at 334-836-3208.

www.SunSouthBank.com

334-677-4411



108 Jamestown Boulevard
Dothan, Alabama 36301

Member
FDIC

PSRRT STD
ECRWS
U.S. POSTAGE
PAID
EDDM RETAIL

Local
Postal Customer

HAPWOOD™ BY HOWELL
NO CUPPING. NO GAPPING. NO PROBLEM.

WARRANTY

We offer the industry's only warranty against seasonal movement.

REPUTATION

Less than 1 claim per million square feet over the last 10 million feet.

UNIQUE

Our unique 5 step manufacturing process is what sets us apart.

MADE IN USA

Our flooring is made in the USA with components harvested in the USA.

EXPERIENCE

We are the oldest continuous site finished engineered flooring manufacturer.

ENVIRONMENT

We use fewer trees per floor from sustainable, renewable resources.

WHY CHOOSE HAPWOOD?

WARRANTY

With Hapwood™ you get the confidence that comes with the industry's only limited lifetime transferable warranty against seasonal movement. Each warranty is:

- Free
- Transferable
- Lifetime
- Registered

Howell Hardwood Flooring utilizes a unique manufacturing process to produce Hapwood™ - an unfinished engineered flooring line that remains stable and flat during seasonal humidity changes.

No Cupping, No Gapping, No Problem.™ Year after year after year... Guaranteed! Hapwood™ by Howell- Ask for it by name.

HOWELL
HARDWOOD FLOORING

Howell Hardwood Flooring
1114 Blackshear Street
Dothan, Alabama 36303
334-792-1197
howellflooring.com

No more cupping & gapping! Guaranteed!

CUPPING AND GAPPING ARE CAUSED BY SEASONAL CHANGES IN HUMIDITY. ELIMINATE CALL-BACKS, LOST REVENUE, AND UNHAPPY CUSTOMERS DUE TO SEASONAL MOVEMENT.

nwfa LEAD FREE CARB EPA

HAPWOOD™ BY HOWELL
NO CUPPING. NO GAPPING. NO PROBLEM.

WARRANTY

We offer the industry's only warranty against seasonal movement.

REPUTATION

Less than 1 claim per million square feet over the last 10 million feet.

UNIQUE

Our unique 5 step manufacturing process is what sets us apart.

MADE IN USA

Our flooring is made in the USA with components harvested in the USA.

EXPERIENCE

We are the oldest continuous site finished engineered flooring manufacturer.

ENVIRONMENT

We use fewer trees per floor from sustainable, renewable resources.

WHY CHOOSE HAPWOOD?

EXPERIENCE

The Hapwood™ product line's roots go back three generations. H.C. "Hap" Howell, was the founder of Howell Hardwood Flooring's parent company almost 75 years ago. Harry Howell, Jr., continued to build on the same foundation, and today Clay Howell carries on the family legacy.

There's a reason that Hapwood™ is the oldest continuous unfinished engineered flooring product line on the market! It begins with our excellent partners - our suppliers, our well-trained staff, and our customers. We began manufacturing Hapwood™ 22 years ago with a desire to be excellent and always improving.

So whether it's for new construction or remodeling, you can count on time-tested quality with each and every board.

Hapwood™ by Howell- Ask for it by name.

HOWELL
HARDWOOD FLOORING

Howell Hardwood Flooring
1114 Blackshear Street
Dothan, Alabama 36303
334-792-1197
howellflooring.com

WITH OVER 22 YEARS OF EXPERIENCE, HAPWOOD™ IS THE OLDEST CONTINUOUS UNFINISHED ENGINEERED FLOORING PRODUCT LINE ON THE MARKET!

nwfa LEAD FREE CARB EPA

HAPWOOD™ BY HOWELL
NO CUPPING. NO GAPPING. NO PROBLEM.

WARRANTY

We offer the industry's only warranty against seasonal movement.

REPUTATION

Less than 1 claim per million square feet over the last 10 million feet.

UNIQUE

Our unique 5 step manufacturing process is what sets us apart.

MADE IN USA

Our flooring is made in the USA with components harvested in the USA.

EXPERIENCE

We are the oldest continuous site finished engineered flooring manufacturer.

ENVIRONMENT

We use fewer trees per floor from sustainable, renewable resources.

WHY CHOOSE HAPWOOD?

UNIQUE

Howell Hardwood Flooring utilizes a unique manufacturing process to produce Hapwood™ - an unfinished engineered flooring line that remains stable and flat during seasonal humidity changes.

Howell's time-tested five step manufacturing process creates boards that fit together perfectly regardless of width, style, or species, and eliminates issues caused by cupping and gapping. The Howell process:

- Two-Step Moisture Acclimation
- Balanced Face and Back Construction
- One-Step Hot Pressing
- Pre-Sanding
- Diamond Tooling

Hapwood™ by Howell- Ask for it by name.

HOWELL
HARDWOOD FLOORING

Howell Hardwood Flooring
1114 Blackshear Street
Dothan, Alabama 36303
334-792-1197
howellflooring.com

22 SKUs One Beautiful Floor

EVERY NOW AND THEN, A PROJECT COMES ALONG THAT IS SO UNIQUE, SO SPECIAL...WE CAN'T WAIT TO SEE THE FINISHED PROJECT FOR LMB DESIGN IN HOUSTON, HAPWOOD™ BY HOWELL WAS LITERALLY THE PERFECT FIT!

nwfa LEAD FREE CARB EPA

HAPWOOD™ BY HOWELL
NO CUPPING. NO GAPPING. NO PROBLEM.

WARRANTY

We offer the industry's only warranty against seasonal movement.

REPUTATION

Less than 1 claim per million square feet over the last 10 million feet.

UNIQUE

Our unique 5 step manufacturing process is what sets us apart.

MADE IN USA

Our flooring is made in the USA with components harvested in the USA.

EXPERIENCE

We are the oldest continuous site finished engineered flooring manufacturer.

ENVIRONMENT

We use fewer trees per floor from sustainable, renewable resources.

WHY CHOOSE HAPWOOD?

ENVIRONMENT

Can beautiful flooring have a positive impact on the environment? The answer is yes if it's Hapwood™!

- According to the USDA's latest data, the volume of hardwood timber in the US has continued to increase for the past 65 years, and hardwood trees contribute to cleaner air and cleaner water.
- Hardwood timber is a renewable resource. When hardwood timber is harvested, new trees grow back from the stump.
- Hapwood™ uses fewer trees per square foot than all other site finished hardwood options, and fewer trees per square foot than most prefinished options.
- Choosing a renewable, sustainable Hapwood™ floor is both beautiful and good for the environment.

Hapwood™ by Howell - Ask for it by name.

HOWELL
HARDWOOD FLOORING

Howell Hardwood Flooring
1114 Blackshear Street
Dothan, Alabama 36303
334-792-1197
howellflooring.com

HAPWOOD™ IS MADE FROM 100% SUSTAINABLE AND RENEWABLE AMERICAN PRODUCED RESOURCES, AND USES FEWER TREES PER SQUARE FOOT THAN OTHER HARDWOOD FLOORING.

nwfa LEAD FREE CARB EPA

HAPWOOD™ BY HOWELL
NO CUPPING. NO GAPPING. NO PROBLEM.

WARRANTY

We offer the industry's only warranty against seasonal movement.

REPUTATION

Less than 1 claim per million square feet over the last 10 million feet.

UNIQUE

Our unique 5 step manufacturing process is what sets us apart.

MADE IN USA

Our flooring is made in the USA with components harvested in the USA.

EXPERIENCE

We are the oldest continuous site finished engineered flooring manufacturer.

ENVIRONMENT

We use fewer trees per floor from sustainable, renewable resources.

WHY CHOOSE HAPWOOD?

MADE IN THE USA

Hapwood™ is made in the USA with components harvested in the USA. That means no tariffs which makes Hapwood™ one of the most price stable unfinished engineered products on the market. When you purchase Hapwood™, you are choosing high quality hardwood flooring and supporting "Hometown USA" jobs.

On early mornings, you'll find Howell employees gearing up for a busy day of producing the highest quality engineered hardwood flooring product in America! A number of our employees have been with us for decades. As others joined Howell through the years, one thing continues to be passed along - we are all passionate about making products known for their beauty and long lasting quality.

Hapwood™ by Howell- Ask for it by name.

HOWELL
HARDWOOD FLOORING

Howell Hardwood Flooring
1114 Blackshear Street
Dothan, Alabama 36303
334-792-1197
howellflooring.com

NOT ONLY DO WE MANUFACTURE OUR HARDWOOD FLOORING IN THE U.S., ALL COMPONENTS USED IN OUR PROCESS ARE HARVESTED RIGHT HERE IN THE USA!

nwfa LEAD FREE CARB EPA

HAPWOOD™ BY HOWELL
NO CUPPING. NO GAPPING. NO PROBLEM.

WARRANTY

We offer the industry's only warranty against seasonal movement.

REPUTATION

Less than 1 claim per million square feet over the last 10 million feet.

UNIQUE

Our unique 5 step manufacturing process is what sets us apart.

MADE IN USA

Our flooring is made in the USA with components harvested in the USA.

EXPERIENCE

We are the oldest continuous site finished engineered flooring manufacturer.

ENVIRONMENT

We use fewer trees per floor from sustainable, renewable resources.

WHY CHOOSE HAPWOOD?

REPUTATION

Quality is important when selecting your floor of choice and even more so after installation. And that's what Hapwood™ by Howell brings to the table: averaging less than one claim per million square feet over the last 10 million square feet.

"Because of nail down solids inherent seasonal movement, we have almost exclusively moved our site finish business to Hapwood™ by Howell. With over 500,000 ft installed, we are proud to say Hapwood™ is virtually trouble free and we have had ZERO issues with cupping or gapping."

BOB BURTON - President Southwestern Carpets

That's Howell's "One in a Million" quality commitment.

Hapwood™ by Howell - Ask for it by name.

HOWELL
HARDWOOD FLOORING

Howell Hardwood Flooring
1114 Blackshear Street
Dothan, Alabama 36303
334-792-1197
howellflooring.com

HAPWOOD™ WHITE OAK FLOORING WAS CHOSEN WHEN THE WHITE HOUSE UPDATED A BEDROOM. FROM THE WHITE HOUSE TO YOUR HOUSE, HAPWOOD™ MAKES EVERY HOME BEAUTIFUL.

nwfa LEAD FREE CARB EPA

HOWELL
HARDWOOD FLOORING

HAPWOOD
BY HOWELL

NO CUPPING, NO GAPPING, NO PROBLEM.

Unfinished Engineered

Species	Thickness	Ply	Wear Layer	Grade	Length*
Hickory	3/8"	3	3.2 mm	#1 & Btr	49 1/4"
Red Oak	3/8"	3	3.2 mm	#1 & Btr	49 1/4"
Red Oak Mill Crafted**	3/8"	3	3.2 mm	#1 & Btr	49 1/4"
White Oak	3/8"	3	3.2 mm	#1 & Btr	49 1/4"
White Oak Mill Crafted**	3/8"	3	3.2 mm	#1 & Btr	49 1/4"
White Oak Northern Mill Crafted**	3/8"	3	3.2 mm	#1 & Btr	49 1/4"
White Oak Northern Mill Crafted**	3/8"	3	3.2 mm	Euro Grade***	49 1/4"

Hickory	1/2"	5	2.7 mm	#1 & Btr	49 1/4"
Hickory	1/2"	5	3.2 mm	#1 & Btr	49 1/4"
Hickory	1/2"	3	4.2 mm	#1 & Btr	49 1/4"
Red Oak	1/2"	5	2.5 mm	#1 & Btr	49 1/4"
Red Oak Mill Crafted**	1/2"	5	3.2 mm	#1 & Btr	49 1/4"
Red Oak	1/2"	3	4.2 mm	#1 & Btr	49 1/4"
Walnut	1/2"	5	3.2 mm	#1 & Btr	49 1/4"
White Oak	1/2"	5	2.7 mm	#1 & Btr	49 1/4"
White Oak	1/2"	5	2.7 mm	Character	49 1/4"
White Oak Mill Crafted**	1/2"	5	3.2 mm	#1 & Btr	49 1/4"
White Oak Northern Mill Crafted**	1/2"	5	3.2 mm	Euro Grade***	49 1/4"
White Oak Northern Mill Crafted**	1/2"	5	3.2 mm	#1 & Btr	49 1/4"
White Oak	1/2"	3	4.2 mm	#1 & Btr	49 1/4"

* Length is random up to length described above. Approximately 80% of footage will be full length.
 ** Mill Crafted** oaks have the look of lumber and the stability of engineered.
 *** Euro Grade contains black filled splits along with black filled knots.
 For Mill Crafted and Euro Grade, we give special attention to blending vertical, cathedral, and flat grain patterns throughout the floor.
 Bundle factors are 21.25 sf/bundle for 2 1/2" and 3" products and 23.5 sf/bundle for 1" and 2" products.
 2 1/2" & 3" Pallet Size: 1,062.5 sq ft; 3" Pallet Size: 1,175 sq ft; 2" Pallet Size: 1,151.5 sq ft.
 Custom widths or beveled edge products can be produced with an upcharge/set up fee depending on quantity.
 Broken pallet fee of \$20 for all orders under 1000 feet.
 Howell products are EPA, TSCA Title VI, and CARB Phase 2 certified.

Howell Hardwood Flooring
 1114 Blackshear Street
 Dothan, Alabama 36303
 334-792-1197
 howellflooring.com

nwfa LACEY ACT COMPLIANT CARB COMPLIANT EPA

Nuova Legna
HOWELL HARDWOOD FLOORING

The Nuova Legna collection features 6 beautifully crafted products. Each unique style was designed in collaboration with architects, builders, installers and manufacturers to ensure both beauty and performance.

White Oak Bionda Castana

The Nuova Legna Collection

Beauty
7" White Oak - double color, light wire brushed

Performance
3/8" x 7" wide planks
2 mm wear layer
5-ply Engineered for greater stability
UV cured aluminum oxide finish

Installation
Nail, Glue or Float
Radiant Heat

Warranty
Lifetime structural
25 year residential finish
3 year light commercial

Low Maintenance
No oil or wax
Simply sweep, vacuum & clean with hardwood floor cleaner

Environmentally Friendly
Lacey Act Compliant
Carb-II certified
EPA TSCA Title VI Compliant
Renewable resource
Efficient Manufacturing Process (Our cutting technique utilizes a larger percentage of each log meaning fewer trees are needed.)

Jointly Made By
HOWELL
HARDWOOD FLOORING
MATTERA
HARDWOOD FLOORING

334-792-1197 • howellflooring.com • f

nwfa LACEY ACT COMPLIANT CARB COMPLIANT

HOWELL
HARDWOOD FLOORING

NO CUPPING.
NO GAPPING.
NO PROBLEM.

ESTABLISHED IN 1946

HAPWOOD
BY HOWELL

HOWELLFLOORING.COM

HOWELL
HARDWOOD FLOORING

Nuova Legna
HOWELL HARDWOOD FLOORING



Yoga & Massage Studio

NatureGalleryArt.com



Located in the historic district of downtown Dothan, The Nature Gallery brings a space dedicated to self-enrichment and tranquility with yoga and massage therapy in the unique setting of an art gallery.



Yoga

Our yoga classes are a natural remedy for reducing stress, reenergizing the body and enhancing mental clarity. Group classes are 1 hour long and include Gentle flow, Vinyasa flow, Bowspring Practice and Yin. We offer yoga mats plus other tools needed to make your practice effective. Private yoga instruction is also available by appointment.

Massage Therapy

The Nature Gallery also offers massage therapy that will leave you in a blissful state of relaxation while improving your health and mental clarity. We have two licensed therapists who use the most current recognized methods of swedish, deep tissue, myofascial and hot stone massage therapies to treat everything from muscle aches and tension headaches to poor posture and sleeplessness. Our massage therapists are available by appointment only.

The Nature Gallery • 156 N. Foster St. • Dothan, AL • 334.671.2050
Gift certificates are available for yoga classes, massage therapy and merchandise.



The Wise on Foster is a versatile event space and venue located in downtown Dothan. Housed in an elegant 1920s former theatre, The Wise was renovated by designer Jeanne Tarwater in 2014 and created for ultimate adaptability in size and scale with style.

www.thewiseonfoster.com



When it comes to corporate events, The Wise is a perfect combination of professionalism, convenience and comfort. Your guests will appreciate the historic features coupled with the relaxed atmosphere. With its distressed wood, brick and metal work, our space offers an industrial urban canvas primed for corporate events and meetings. This two-story, 4,000 square foot space can accommodate up to 125 guests and is an unprecedented choice for a memorable experience.

From initial planning to catering options and clean up, our full-service team becomes your support staff so you can get down to business. The Wise includes a complete catering kitchen, table and seating for 125, high-quality linens and stylish but understated table décor. State-of-the-art audio-visual amenities are available as well.

Rental packages begin at \$400.00 and can be customized to suit your needs. For more information, please find us on Facebook, visit thewiseonfoster.com, or better yet, give us a call at 334-699-6200.

135 N. Foster Street
Dothan, AL 36303
info@thewiseonfoster.com
334-699-6200

Excellence in
Electrical Ingenuity

HIGGINS ELECTRIC



higginelectric.com | 800.806.4859

HIGGINS ELECTRIC



Qualifications Statement

1360 Columbia Highway

Dothan, AL 36301

334.793.4859



